

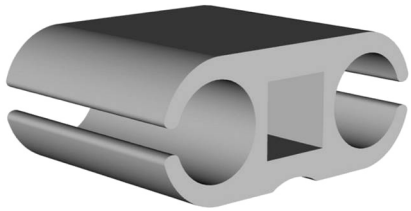


## Keder Extrusion

We stock mill finish aluminium keder rails which can be fitted to your structures. We also hold stock of own structure extrusions which can be used as structural members.

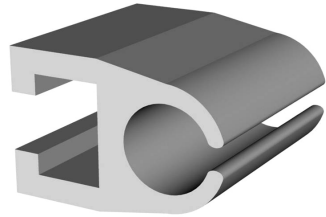
### Twin Keder Rail (Shotgun) 55 x 23mm

Keder Size : 10 to 12mm  
Length: 5.0m



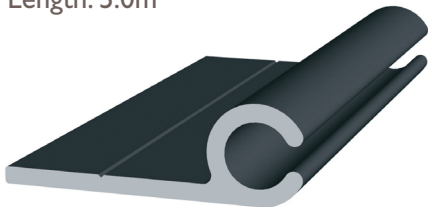
### Single Keder Rail (Single Shotgun) 40 x 28mm

Keder Size : 10 to 12mm  
Length: 5.0m



### Awning Keder Rail (PTrack) 52 x 17mm

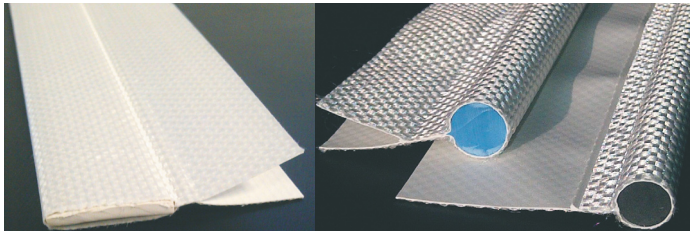
Keder Size : 7mm to 8mm  
Length: 5.0m



## Dispensers

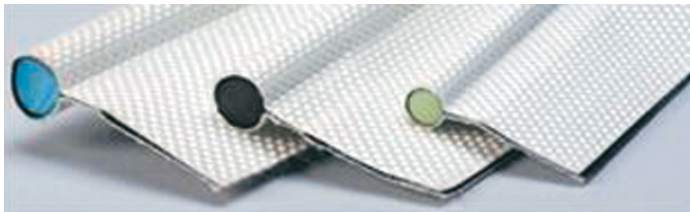
Made from a painted steel frame and mounted on double casters for easy manoeuvring around the workshop.

- Designed to accept all J & J. Carter made coils of Keder. You can now handle rolls with less wastage.
- Reduces risk of injury caused by manual handling.
- Ensures perfect unreeling from the outside of the coil without twisting from the centre.



## Fabrication & Finishing

- CNC Cutting of Fabric Panels
- High Frequency Welding
- Sewing
- Eyeletting



## Contact

For a fast and friendly service  
call **01264 721630**  
or visit [www.jjcarter.com](http://www.jjcarter.com)



# KEDER

For use in :

- Awnings
- Tents & Marquees
- Sails
- Banners & Building Wraps



Call 01264 721630



Part No.	Keder Description	Core Dia.	Core Colour	O/A Dia.	Keder Fabric Weave	Fabric Colour	Fabric Width	Flap Width	Weld Size	Leg Style	Weldable Width	Roll Length(m)	Weight per metre Kg/m
K04-C (4/80/5/DF)	4mm Camping	4	Natural	4.5	1x1 Weave	White / Black	80	33	5	Double	28	300	0.040
K05-C (5/80/5/DF)	5mm Camping	5	White	5.5	1x1 Weave	White / Black	80	32	5	Double	27	300	0.070
K06-C (6/80/5/DF)	6mm Camping	6	Natural	6.5	1x1 Weave	White / Black	80	30	5	Double	25	300	0.090
K06-R (6/140/5/DF)	6mm Repair	6	Natural	7	1x1 Weave	White / Black	140	60	5	Double	55	150	0.130
K06-S (6/85/5/DF)	6mm Standard	6	Natural	7	Panama 1100 dtex.	White / Opaque	85	33	5	Double	28	300	0.095
K07-C (7/80/5/DF)	7mm Camping	7	Green	7.5	1x1 Weave	White / Black	80	29	5	Double	24	300	0.085
K07-R (7/140/8/DF)	7mm Repair	7	Green	8	Panama 1100 dtex.	White / Opaque	140	59	8	Double	51	150	0.140
K07-S (7/85/8/DF)	7mm Standard	7	Green	8	Panama 1100 dtex.	White / Opaque	85	31	8	Double	23	300	0.090
K07-SG (7/100/8/DF)	7mm Easy-GO	7	Green	8	Panama 2200 dtex.	White	100	39	8	Double	31	300	0.120
K07-W (7/100/8/DF)	7mm Wide Flap	7	Green	8	Panama 1100 dtex.	White / Opaque	100	39	8	Double	31	300	0.120
K08-C (8/80/5/DF)	8mm Camping	8	Maroon	9	1x1 Weave	White / Black	80	27	5	Double	22	300	0.130
K08-R (8/150/8/DF)	8mm Repair	8	Maroon	9	Panama 1100 dtex.	White / Opaque	140	57	8	Double	49	150	0.160
K08-S (8/85/8/DF)	8mm Standard	8	Maroon	9	Panama 1100 dtex.	White / Opaque	85	29	8	Double	21	300	0.140
K08-SVR (8/100/8/DF)	8mm Silver	8	Maroon	9	Panama 1100 dtex.	Silver	100	37	8	Double	29	300	0.140
K09-SF (9/80/8/SF)	9mm Single Flap	9	Yellow	9.5	1x1 Weave	White	80	46	5	Single	41	300	0.140
K09-SF-BK (9/80/8/SF)	9mm Single Flap	9	Yellow	9.5	1x1 Weave	Black	80	46	5	Single	41	300	0.140
K09-DF (9/80/5/DF)	9mm Double Flap	9	Yellow	9.5	1x1 Weave	White	80	25	5	Double	20	300	0.140
K09-DF-BK (9/80/5/DF)	9mm Double Flap	9	Yellow	9.5	1x1 Weave	Black	80	25	5	Double	20	300	0.140
K09-R (9/150/8/DF)	9mm Repair	9	Yellow	10	Panama 1100 dtex.	White / Opaque	150	60	8	Double	52	150	0.180
K09-S (9/100/8/DF)	9mm Standard	9	Yellow	10	Panama 1100 dtex.	White / Opaque	100	35	8	Double	27	300	0.160
K09-SG (9/100/8/DF)	9mm Easy-GO	9	Yellow	10	Panama 2200 dtex.	White	100	35	8	Double	27	300	0.160
K10-SF (10/85/8/SF)	10mm Single Flap	10	Black	11	Panama 1100 dtex.	White / Opaque	85	45	8	Single	37	300	0.160
K10-R (10/150/8/DF)	10mm Repair	10	Black	11	Panama 1100 dtex.	White / Opaque	150	59	8	Double	51	150	0.200
K10-S (10/100/8/DF)	10mm Standard	10	Black	11	Panama 1100 dtex.	White / Opaque	100	34	8	Double	26	300	0.180
K10-SG (10/100/8/DF)	10mm Easy-GO	10	Black	11	Panama 2200 dtex.	White	100	34	8	Double	26	300	0.200
K10-SVR (10/100/8/DF)	10mm Silver	10	Black	11	Panama 1100 dtex.	Silver	100	34	8	Double	26	300	0.200
K11-R (11/150/8/DF)	11mm Repair	11	Red	12	Panama 1100 dtex.	White / Opaque	150	57	8	Double	49	150	0.230
K11-S (11/100/8/DF)	11mm Standard	11	Red	12	Panama 1100 dtex.	White / Opaque	100	32	8	Double	24	300	0.200
K11-SG (11/100/8/DF)	11mm Easy-GO	11	Red	12	Panama 2200 dtex.	White	100	32	8	Double	24	300	0.200
K12-FR (12/100/8/DF)	12mm Flame	12	Blue	13	Panama 1100 dtex.	White	100	31	8	Double	23	300	0.220
K12-R (12/150/8/DF)	12mm Repair	12	Blue	13	Panama 1100 dtex.	White / Opaque	150	56	8	Double	48	150	0.250
K12-S (12/100/8/DF)	12mm Standard	12	Blue	13	Panama 1100 dtex.	White / Opaque	100	31	8	Double	23	300	0.220
K12-SG (12/100/8/DF)	12mm Easy-GO	12	Blue	13	Panama 2200 dtex.	White	100	31	8	Double	23	300	0.220
K13-S (13/150/8/DF)	13mm Standard	13.5	Natural	14.5	Panama 1100 dtex.	White / Opaque	150	53	8	Double	45	150	0.310
K23-FB (23X3/100/5/DF)	23x3 Flat D/Flap	23x3	Beige	24.5	1x1 Weave	White / Black	100	24	5	Double	19	200	0.145



## Fabric Grades.

- 1 x 1 Weave Camping
- 2 x 2 Panama 1100 dtex.
- Silver Panama 1100 dtex.
- Easy-Go 2200 dtex.
- Easy-Glide Flame Retardent

## Fabric Colours.

- White Translucent
- White Opaque
- Silver
- Black (only in 1x1 Weave)
- Other colours available subject to minimum order.

## Configurations

- Single Flap (Offset)
- Double Flap
- Solid Welded Flap

Fabric + Colour + Core + Configuration  
= Your choice of Keder

